

Patrol Power 2020-Up Ford Utility Cargo Guard Installation Guide

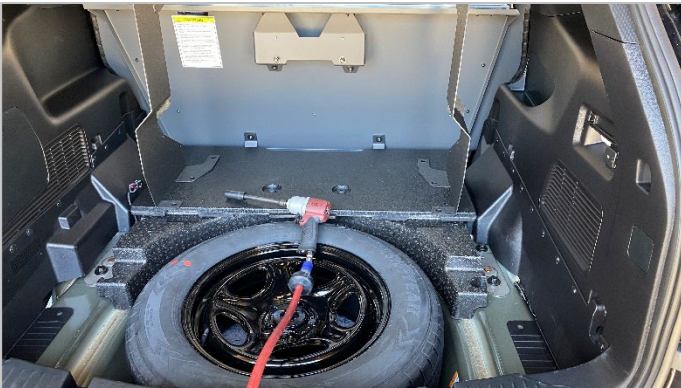
* For Use With Setina Partition Only *

Included Hardware:

- 12 - 5/16" carriage bolts
- 12 - 5/16" flange nuts
- 2 - 2 1/4" aluminum spacers
- 2 - 1/4" x 1" fender washers

Recommended Tools:

- 1/2" ratchet wrench
- 18mm socket & ratchet
- 7/16" socket & ratchet
- 8mm socket & ratchet



Step 1. Remove rear cargo floor panel and underlying foam filler panels. Foam panels are secured with M6 bolts and spacers.



Step 2. Trim and reinstall both left and right forward underlying foam filler panels as shown. Trim foam pieces to approximately 5" from side trim panels. This will require removing about 4" of foam on passenger side and 2.75" on driver side.

Patrol Power 2020-Up Ford Utility Cargo Guard Installation Guide

* For Use With Setina Partition Only *



Step 3. Remove rear bolt from support bracket.



Step 4. Place support legs in position. With rear attachment hole aligned with threaded insert, replace rear support bracket bolt and tighten.



Step 5. Install forward support by removing nuts and washers from partition, placing support in place and replacing nuts and washers on partition. Hand tighten hardware

Patrol Power 2020-Up Ford Utility Cargo Guard Installation Guide

* For Use With Setina Partition Only *



Step 6. Replace all foam panels.



Step 7. Insert supplied 2 ¼" spacer & fender washer in hole in foam above threaded inserts and reinstall factory bolt. Note that spacer replaces factory spacer. Washer sits on top of spacer. Replace tire cover panel.



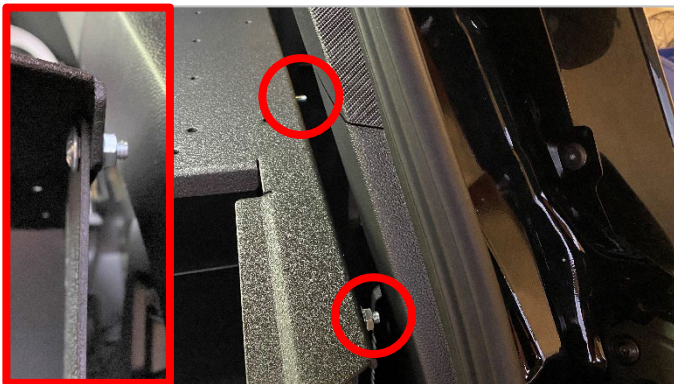
Step 8. Slide cargo guard into position and onto all three support surfaces.

Patrol Power 2020-Up Ford Utility Cargo Guard Installation Guide

* For Use With Setina Partition Only *



Step 9. Using four supplied carriage bolts and flange nuts, bolt shelf to forward support surface. Hand tighten only.



Step 10. Using two supplied carriage bolts and flange nuts, bolt shelf to side support surfaces (use rearmost hole only). One bolt per side, nuts toward outside. Forward hole will also be used for wing mounting.



Step 11. Install side wings using six supplied carriage bolts and flange nuts. Three bolts per side, nuts toward outside.

Patrol Power 2020-Up Ford Utility Cargo Guard Installation Guide

* For Use With Setina Partition Only *



Step 12. Using supplied carriage bolts and flange nuts, bolt shelf to all three support surfaces, four on forward support and two on each side support.



Step 13. Tighten all hardware. A ratcheting combination wrench eases tightening of side support and wing hardware.



Patrol Power 2020-Up Ford Utility Cargo Guard Installation Guide

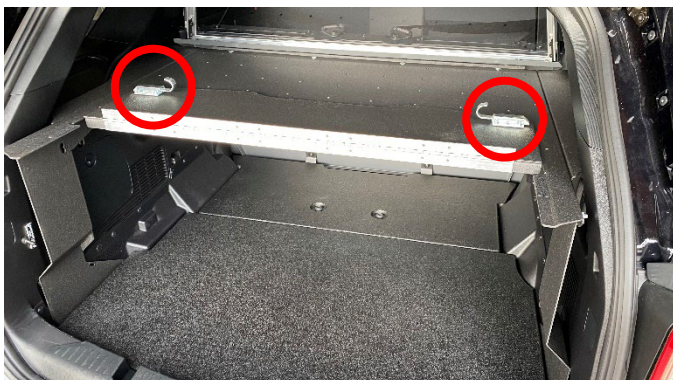
* For Use With Setina Partition Only *



Cargo guard side supports are pre-punched for Sound Off Signal dome light models ECVDMLTST4 or ECVDMLTST4G. Passenger wing is pre-punched for Amerex model 862 fire extinguisher bracket.



Completed installation with access door in closed position. Latches are released by simultaneously pulling inwards on each finger loop and lifting.



Completed installation with access door in raised position for improved access to lower cargo area.